



Ruger Industries, Inc.
32405 Aurora Rd
Solon, OH 44139
Phone: 440-248-4700
Fax: 440-248-8544
www.rugerequipment.com

FULL POWER

MORE HEIGHT

MORE REACH

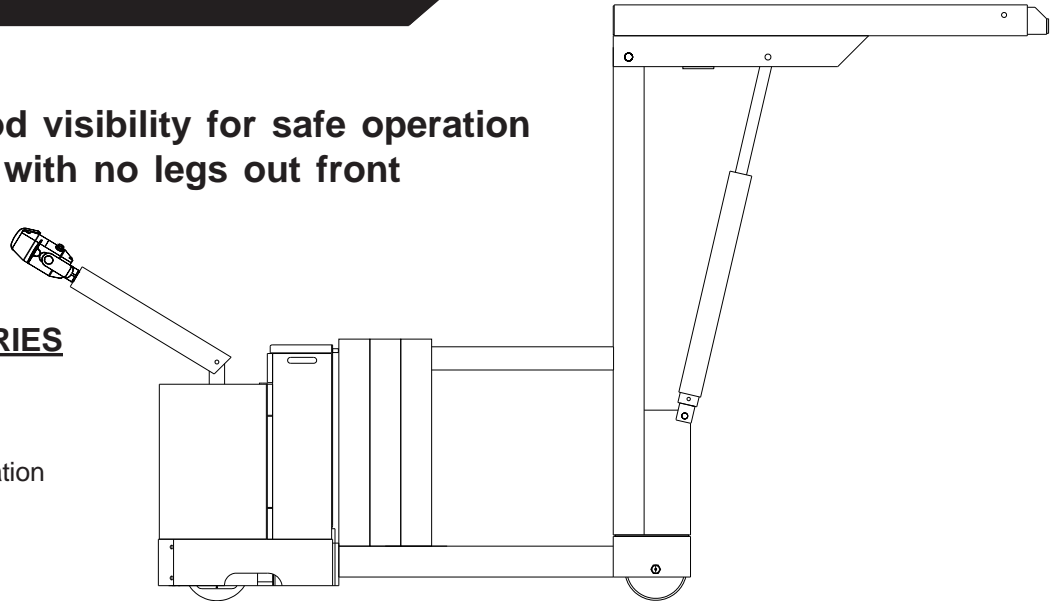
HYDRAULIC

FP2000R

- **2000 lb. Capacity**
- **Operator has good visibility for safe operation**
- **Counterbalanced with no legs out front**

OPTIONAL ACCESSORIES

- Remote Control Pendant
- Wireless Remote Control
- Gel Cell Batteries
- Quick Charger (with in-operation charging)
- Power Hoist
- Power In/Out Boom



STANDARD FEATURES

- Meets Ruger's engineering standards of 150% structural overload of maximum rated capacity
- Built-in hydraulic overload relief valve
- Pressure-compensated flow valve permits pin-point control while lifting heavy or light loads
- Polyurethane drive wheel and load wheels
- Manual extension boom for more reach and height
- Infinity Variable Speed Control
- Solid State Circuitry
- 225 amp/hr batteries and 25 amp, 24 volt on-board charger
- Dynamic brake
- Key lock and battery condition indicator

Prices, Specifications, and Options are subject to Change Without Notice.

All Ruger products are shipped F.O.B. Solon, Ohio 44139
Unit Ships-NMFC #189240 - Class 85 Shipping Wt. 4400lbs

FAX: 440-248-8544

E-mail: lift@rugerequipment.com

The FP2000R allows the operator to move in tight quarters with a small turn radius. Tested and exceeds ANSI/ASME B56.7 standards. Meets ANSI Z.535



Ruger Industries, Inc.
 32405 Aurora Rd
 Solon, OH 44139
 Phone: 440-248-4700
 Fax: 440-248-8544
 www.rugerequipment.com

VERSATILE

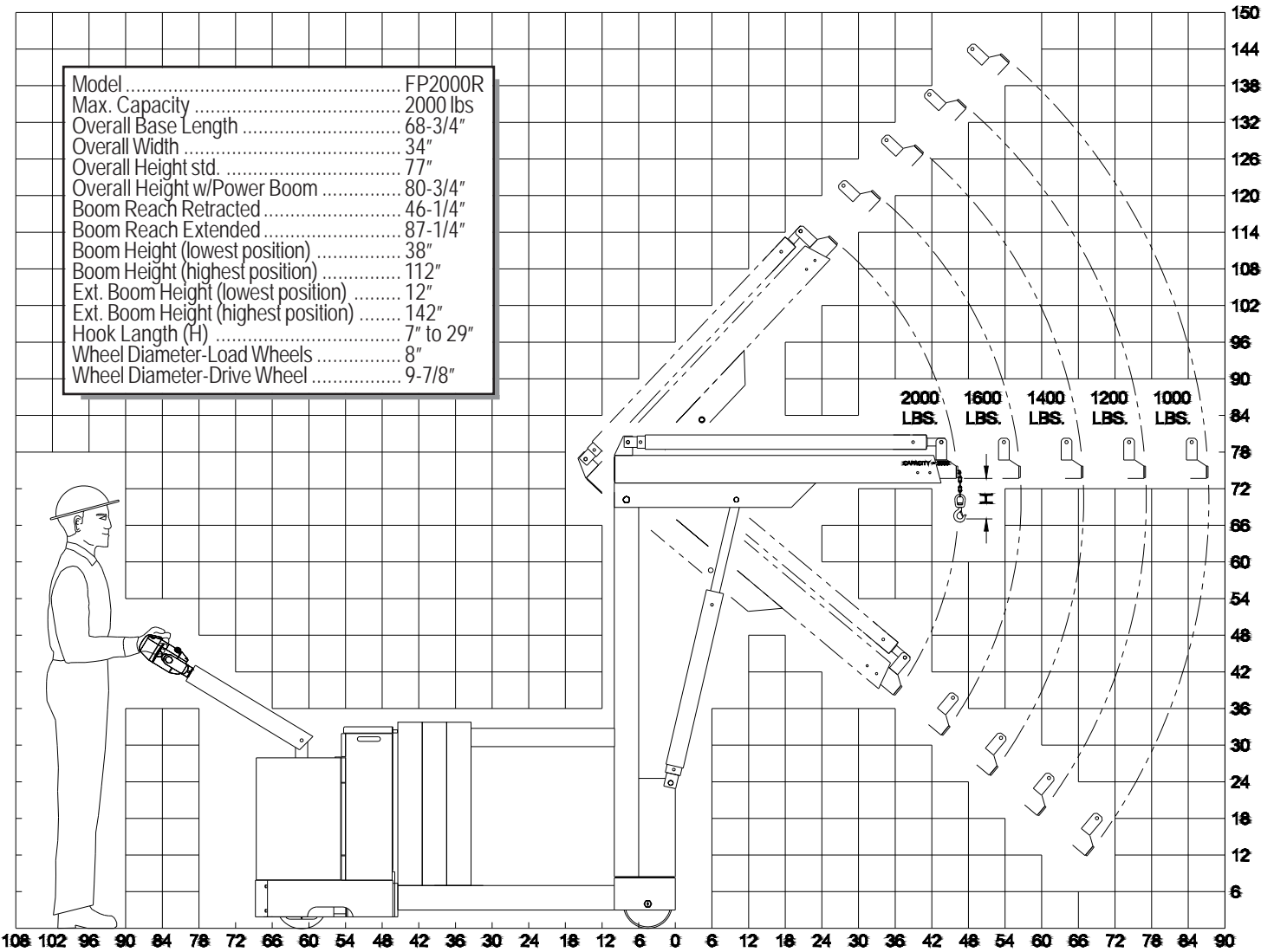
COMPACT

AFFORDABLE

DEPENDABLE

MODEL: FP2000R

Shown with optional power boom. (Part# 211961)



Model	FP2000R
Max. Capacity	2000 lbs
Overall Base Length	68-3/4"
Overall Width	34"
Overall Height std.	77"
Overall Height w/Power Boom	80-3/4"
Boom Reach Retracted	46-1/4"
Boom Reach Extended	87-1/4"
Boom Height (lowest position)	38"
Boom Height (highest position)	112"
Ext. Boom Height (lowest position)	12"
Ext. Boom Height (highest position)	142"
Hook Length (H)	7" to 29"
Wheel Diameter-Load Wheels	8"
Wheel Diameter-Drive Wheel	9-7/8"

NOTE: Ruger can modify any standard dimensions to meet specific customer needs.