



David Round, Inc.
Ruger Division
10200 Wellman Road
Streetsboro, OH 44241
Phone: 440-248-4700
Fax: 440-248-8544
www.rugerindustries.com

VERSATILE

POWERFUL

DEPENDABLE

RELIABLE

HP-3

- **6000 lb. Capacity**
- **Built to handle the toughest jobs**

ACCESSORIES

- **Barrel Grip**
- **Floor Lock**
- **E-Z Steer**
- **Extension Boom**
- **Power-Pak**

STANDARD FEATURES

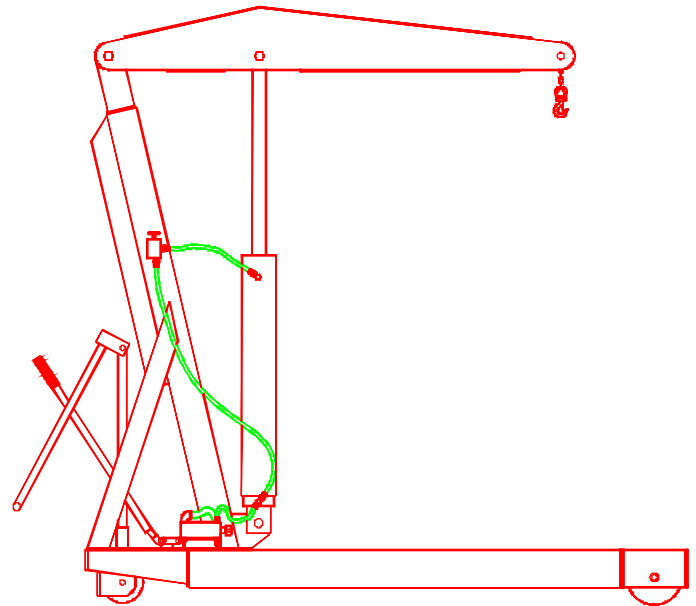
- Meets Ruger's engineering standards of 150% structural overload of maximum rated capacity
- Double-action hydraulic pump for quicker and easier lift
- Built-in hydraulic overload relief valve
(An original Ruger patent)
- Needle type release valve permits pin-point control over lowering and holding of the heaviest or lightest load
- Steel casters with roller bearing wheels
- Swivel hook with safety latch and chain to support heavy loads

Prices, Specifications, and Options are subject to Change Without Notice.

All Ruger products are shipped F.O.B. Streetsboro, Ohio 44241
Unit Ships-NMFC #189240 - Class 85 Shipping Wt. 1050 lbs

FAX: 440-248-8544

E-mail: info@davidround.com



The HP-3 is designed for
the really big jobs.
Tested and exceeds
ANSI/ASME PALD-12C
standards.
Meets ANSI Z.535



David Round, Inc.
 Ruger Division
 10200 Wellman Road
 Streetsboro, OH 44241
 Phone: 440-248-4700
 Fax: 440-248-8544
 www.rugerindustries.com

RELIABLE

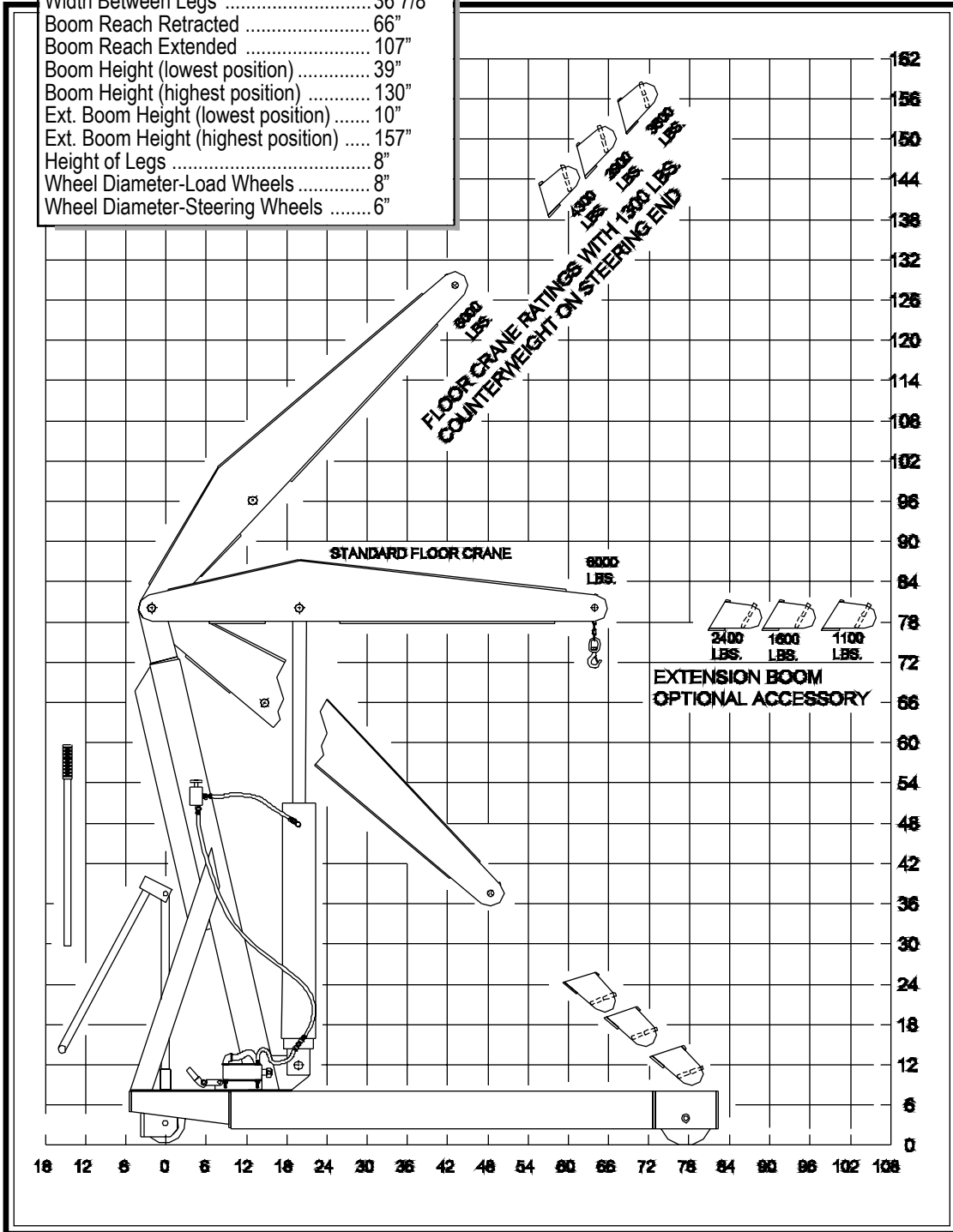
DEPENDABLE

POWERFUL

VERSATILE

MODEL: HP-3

Model	HP-3
Max. Capacity	6000 lbs
Overall Base Length	87 7/8"
Overall Width	48"
Overall Height	82 1/4"
Width Between Legs	36 7/8"
Boom Reach Retracted	66"
Boom Reach Extended	107"
Boom Height (lowest position)	39"
Boom Height (highest position)	130"
Ext. Boom Height (lowest position)	10"
Ext. Boom Height (highest position)	157"
Height of Legs	8"
Wheel Diameter-Load Wheels	8"
Wheel Diameter-Steering Wheels	6"



PUMPING CYCLES needed to raise boom through full travel; 50 with crane set for speed and 235 with crane set for power.

Certain models can be shipped NEXT DAY.

NOTE:
 Ruger can modify any standard dimensions to meet specific customer needs.