



David Round, Inc.
Ruger Division
32405 Aurora Road
Solon, OH 44139
Phone: 440-248-4700
Fax: 440-248-8544
www.rugerindustries.com

HYDRAULIC

AFFORDABLE

COMPACT

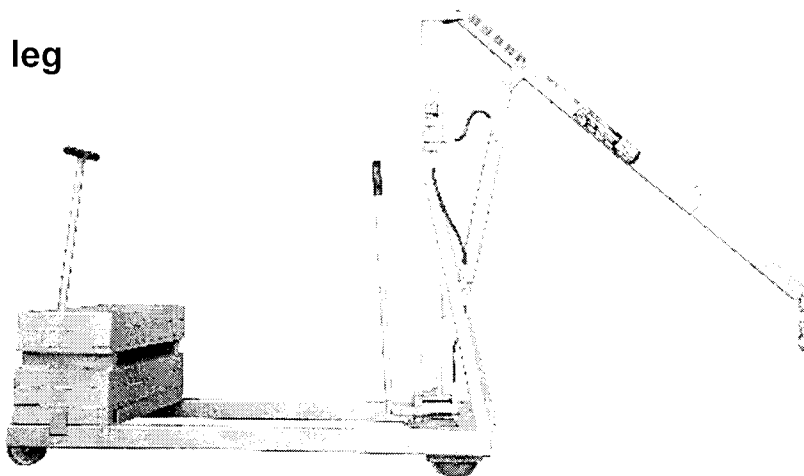
VERSATILE

HP1000R

- 1000 lb. Capacity
- Reversed base eliminates front leg straddle problems

ACCESSORIES

- Barrel Grip
- Floor Lock
- Polyurethane or Steel Wheels
- Power-Pak
- E-Z Steer
- Swivel Boom (Swing motion limited)



STANDARD FEATURES

- Meets Ruger's engineering standards of 150% structural overload of maximum rated capacity
- All counterbalanced units are built to exceed 125% stability factor
- Double action hand pump for quicker and easier lift
- Built-in hydraulic overload relief valve (An original Ruger patent)
- Needle type release valve permits pin-point control over lowering or holding of the heaviest or lightest loads
- Adjustable built-in telescopic boom
- Phenolic resin wheels and casters with roller bearings
- Swivel hook with safety latch and chain for easy positioning of heavy loads

Prices, Specifications, and Options are subject to Change Without Notice.

All Ruger products are shipped F.O.B. Solon, Ohio 44139
Unit Ships-NMFC #189240 - Class 85 Shipping Wt. 240 lbs
Counterweight Ships-NMFC #107420 - CLASS 50 Shipping Wt. 1260 lbs

FAX: 440-248-8544

E-mail: info@davidround.com

The unique and functional reversed base eliminates front leg straddle problems. The HP1000R has a manual built-in telescopic extension boom for more reach and height. Tested and exceeds ANSI/ASME PALD-12C standards. Meets ANSI Z.535



David Round, Inc.
 Ruger Division
 32405 Aurora Road
 Solon, OH 44139
 Phone: 440-248-4700
 Fax: 440-248-8544
 www.rugerindustries.com

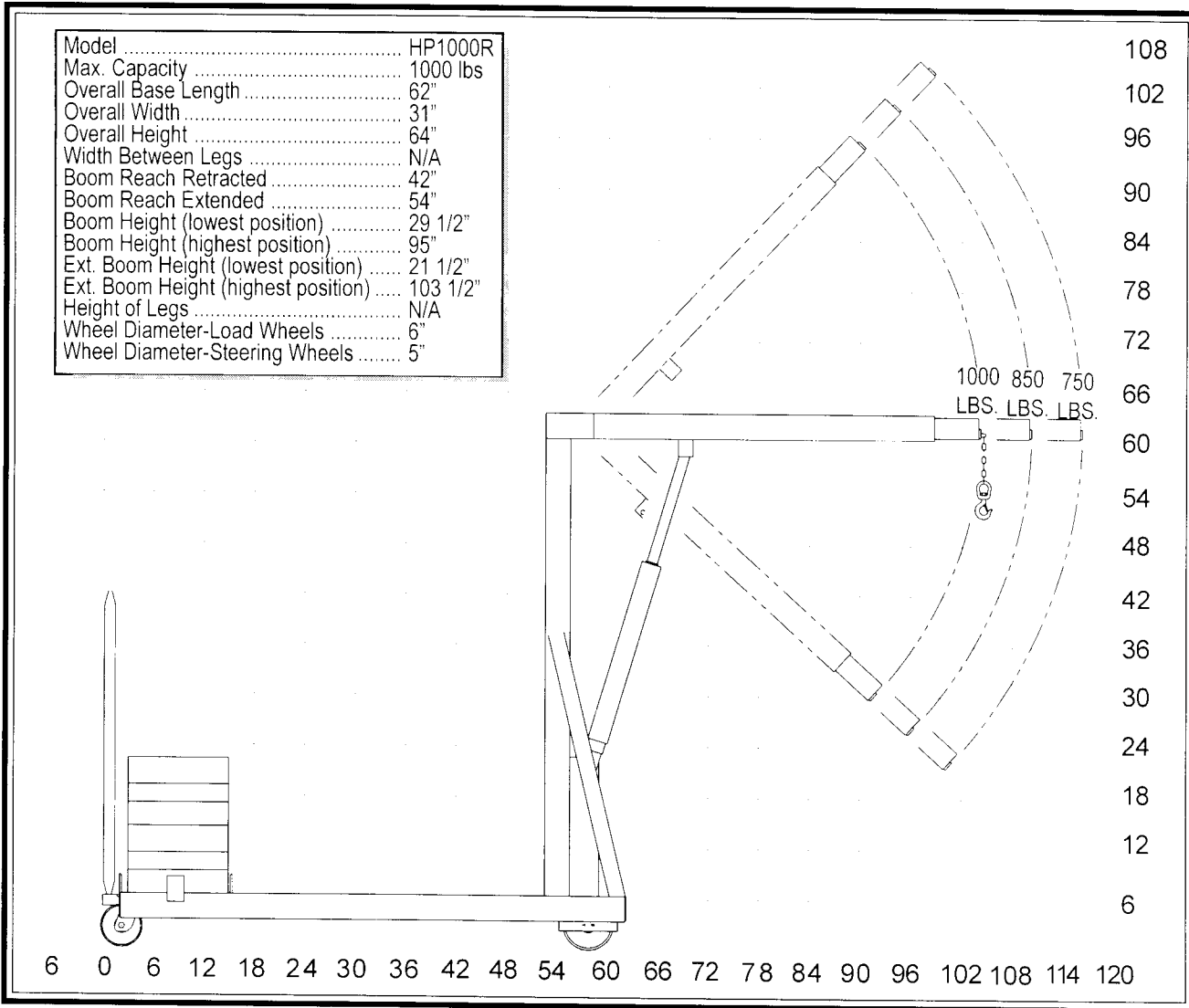
VERSATILE

COMPACT

AFFORDABLE

RELIABLE

MODEL: HP1000R



PUMPING CYCLES needed to raise boom through full travel; 15 with crane set for speed and 25 for crane set for power.

Certain models can be shipped NEXT DAY.

NOTE: Ruger can modify any standard dimensions to meet specific customer needs.