



David Round, Inc.
Ruger Division
10200 Wellman Road
Streetsboro, OH 44241
Phone: 440-248-4700
Fax: 440-248-8544
www.rugerindustries.com

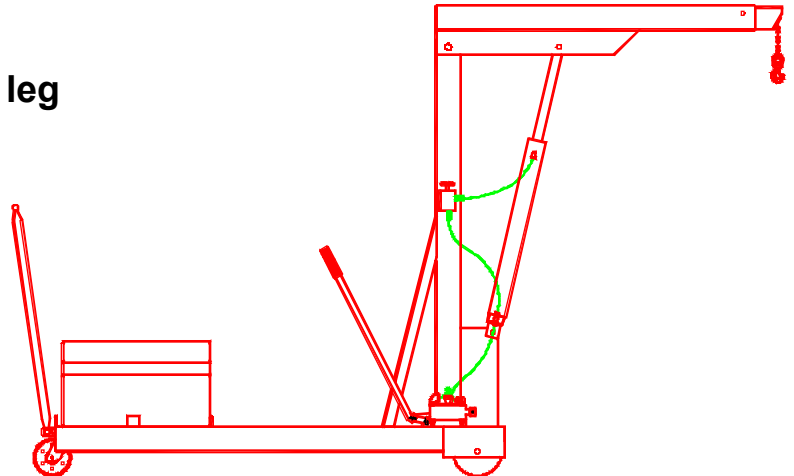
COMPACT**EASY****QUICK****DEPENDABLE**

HP1500R

- **1500 lb. Capacity**
- **Reversed base eliminates front leg straddle problems**

ACCESSORIES

- **Barrel Grip**
- **Floor Lock**
- **Polyurethane or Phenolic Wheels**
- **Power-Pak**
- **E-Z Steer**
- **Swivel Boom (Swing motion limited)**



STANDARD FEATURES

- Meets Ruger's engineering standards of 150% structural overload of maximum rated capacity
- All counterbalanced units are built to exceed 125% stability factor
- Double action hand pump for quicker and easier lift
- Built-in hydraulic overload relief valve (An original Ruger patent)
- Needle type release valve permits pin-point control over lowering or holding of the heaviest or lightest loads
- Adjustable built-in telescopic boom
- Steel wheels and casters with roller bearings
- Swivel hook with safety latch and chain for easy positioning of heavy loads

Prices, Specifications, and Options are subject to Change Without Notice.

All Ruger products are shipped F.O.B. Streetsboro, Ohio 44241
Unit Ships-NMFC #189240 - Class 85 Shipping Wt. 415
Counterweight Ships-NMFC #107420-CLASS 50 Shipping Wt. 1500

FAX: 440-248-8544

E-mail: info@davidround.com

The HP1500R has a manual built-in telescopic extension boom for more reach and height. Reversed base eliminates front leg straddle problems. Tested and exceeds ANSI/ASME PALD-12C standards. Meets ANSI Z.535

David Round, Inc.
 Ruger Division
 10200 Wellman Road
 Streetsboro, OH 44241
 Phone: 440-248-4700
 Fax: 440-248-8544
 www.rugerindustries.com

COMPACT

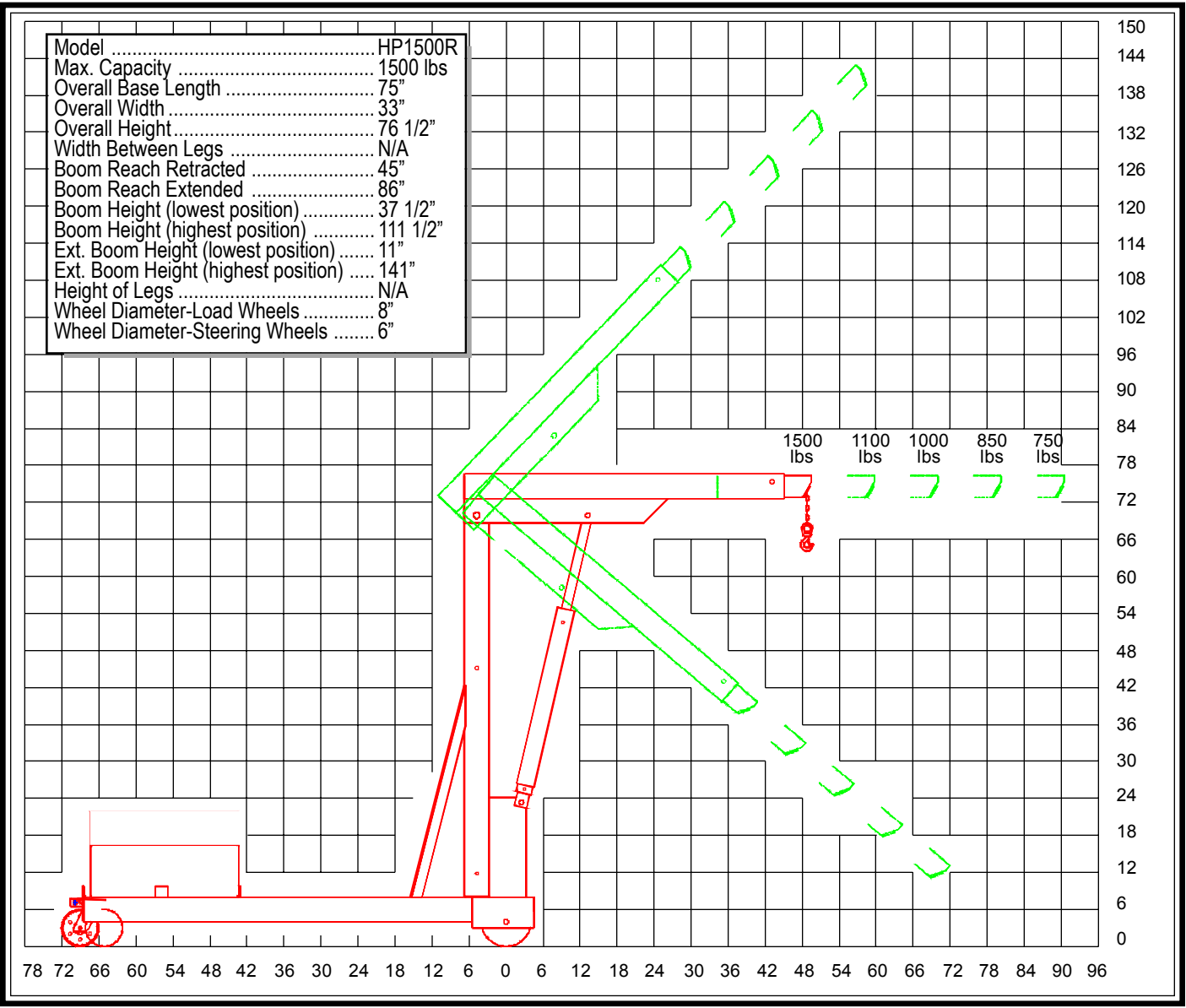
EASY

QUICK

DEPENDABLE

MODEL: HP1500R

Model	HP1500R
Max. Capacity	1500 lbs
Overall Base Length	75"
Overall Width	33"
Overall Height	76 1/2"
Width Between Legs	N/A
Boom Reach Retracted	45"
Boom Reach Extended	86"
Boom Height (lowest position)	37 1/2"
Boom Height (highest position)	111 1/2"
Ext. Boom Height (lowest position)	11"
Ext. Boom Height (highest position)	141"
Height of Legs	N/A
Wheel Diameter-Load Wheels	8"
Wheel Diameter-Steering Wheels	6"



PUMPING CYCLES needed to raise boom through full travel; 35 with crane set for speed and 60 for crane set for power.

Certain models can be shipped NEXT DAY.

NOTE: Ruger can modify any standard dimensions to meet specific customer needs.