



David Round, Inc.  
Ruger Division  
10200 Wellman Road  
Streetsboro, OH 44241  
Phone: 440-248-4700  
Fax: 440-248-8544  
www.rugerindustries.com

**COMPACT****EASY****QUICK****DEPENDABLE**

## HP-2000R

- **2000 lb. Capacity**
- **Reversed base allows easier access to loads**

### ACCESSORIES

- **Barrel Grip**
- **Floor Lock**
- **Polyurethane or Phenolic Wheels**
- **Power-Pak**
- **E-Z Steer**
- **Swivel Boom (Swing motion limited)**



### STANDARD FEATURES

- Meets Ruger's engineering standards of 150% structural overload of maximum rated capacity
- All counterbalanced units are built to exceed 125% stability factor
- Double action hand pump for quicker and easier lift
- Built-in hydraulic overload relief valve (An original Ruger patent)
- Needle type release valve permits pin-point control over lowering and holding of the heaviest or lightest loads
- Adjustable built-in telescopic boom
- Steel wheels and casters with roller bearing wheels
- Swivel hook with safety latch and chain to support heavy loads

Prices, Specifications, and Options are subject to Change Without Notice.

All Ruger products are shipped F.O.B. Streetsboro, Ohio 44241  
Unit Ships-NMFC #189240 - Class 85 Shipping Wt. 415 lbs  
Counterweight Ships-NMFC #107420-CLASS 50 Shipping Wt. 2400 lbs

**FAX: 440-248-8544**

**E-mail: info@davidround.com**

The HP-2000R has a manual built-in telescopic boom for more reach and height. Reversed base eliminates front leg straddle problems. Tested and exceeds ANSI/ASME PALD-12C standards. Meets ANSI Z.535



David Round, Inc.  
 Ruger Division  
 10200 Wellman Road  
 Streetsboro, OH 44241  
 Phone: 440-248-4700  
 Fax: 440-248-8544  
 www.rugerindustries.com

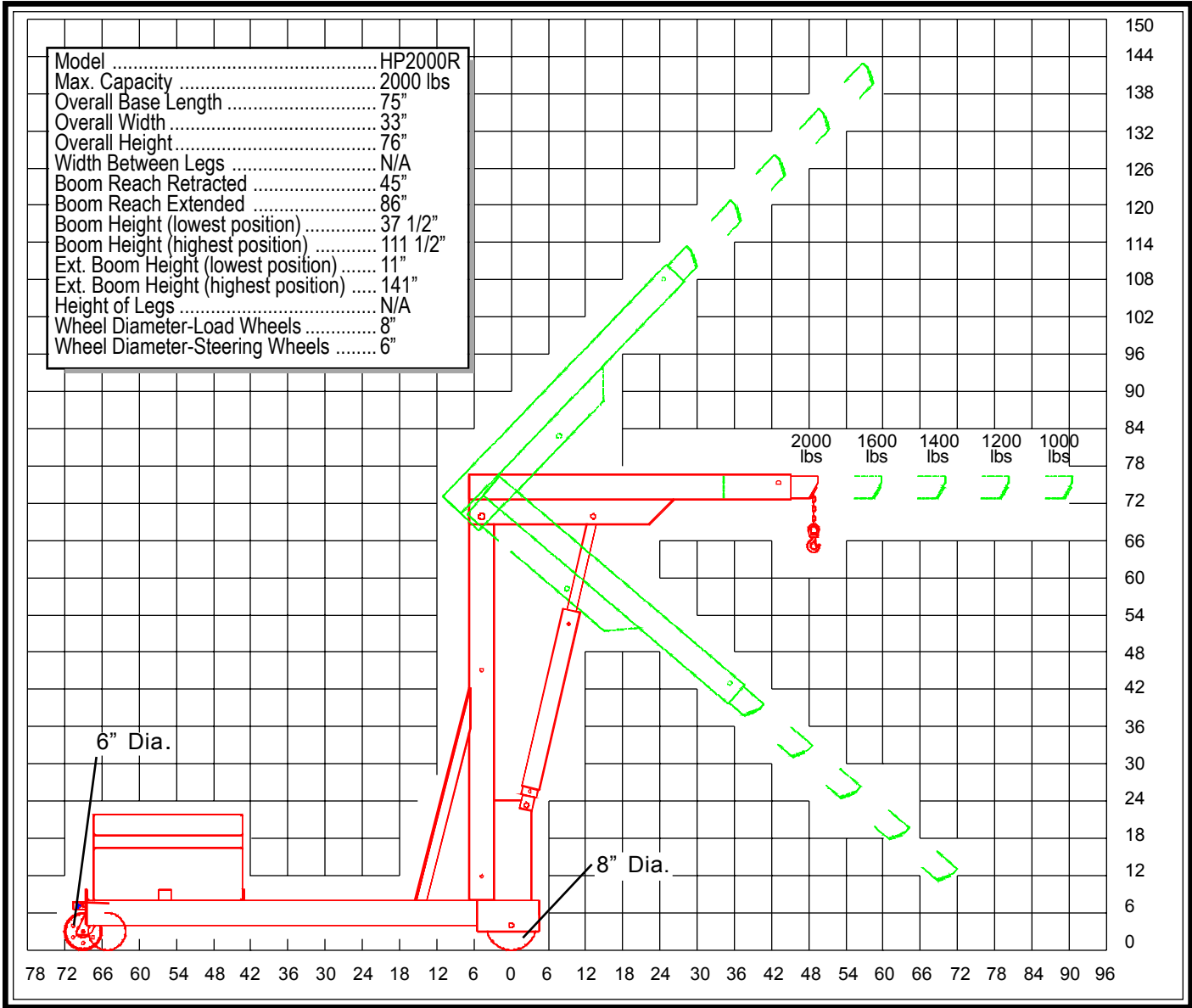
**COMPACT**

**EASY**

**QUICK**

**DEPENDABLE**

# MODEL: HP2000R



PUMPING CYCLES needed to raise boom through full travel; 35 with crane set for speed and 60 for crane set for power.

Certain models can be shipped NEXT DAY.

**NOTE: Ruger can modify any standard dimensions to meet specific customer needs.**