



David Round, Inc.  
Ruger Division  
10200 Wellman Road  
Streetsboro, OH 44241  
Phone: 440-248-4700  
Fax: 440-248-8544  
www.rugerindustries.com

ADJUSTABLE

VERSATILE

FLEXIBLE

AFFORDABLE

## RC1000

- **1000 lb. Capacity**
- **Compact Design to work in close quarters.**

### ACCESSORIES

- **Barrel Grip**
- **Floor Lock**

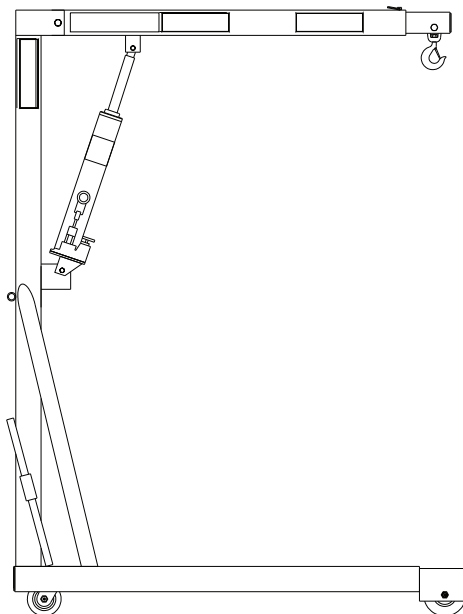
### STANDARD FEATURES

- Meets Ruger's structural engineering standards for 150% of normal lifting capacity
- Completely self-contained hydraulic system with single action jack
- Built-in hydraulic overload relief valve (An original Ruger patent)
- Needle type release valve permits pin-point control over lowering and holding of the heaviest or lightest loads
- Standard adjustable telescopic boom
- Standard casters with non-marking hard rubber wheels with sleeve bearing
- Swivel hook with a safety latch to support heavy loads

Prices, Specifications, and Options are subject to Change Without Notice.

All Ruger products are shipped F.O.B. Streetsboro, OH 44241  
Unit Ships-NMFC #118900 Sub 3 - Class 125  
Shipping Wt. 210 lbs

**FAX: 440-248-8544 E-mail: info@davidround.com**



**Maximum Value and Safety at a Modest Investment.**

**The RC1000 has a manual built-in telescopic extension boom for more reach and height.**

**Tested and exceeds ANSI/ASME PALD-12C standards.**

**Meets ANSI Z.535**



David Round, Inc.  
 Ruger Division  
 10200 Wellman Road  
 Streetsboro, OH 44241  
 Phone: 440-248-4700  
 Fax: 440-248-8544  
 www.rugerindustries.com

**ADJUSTABLE**

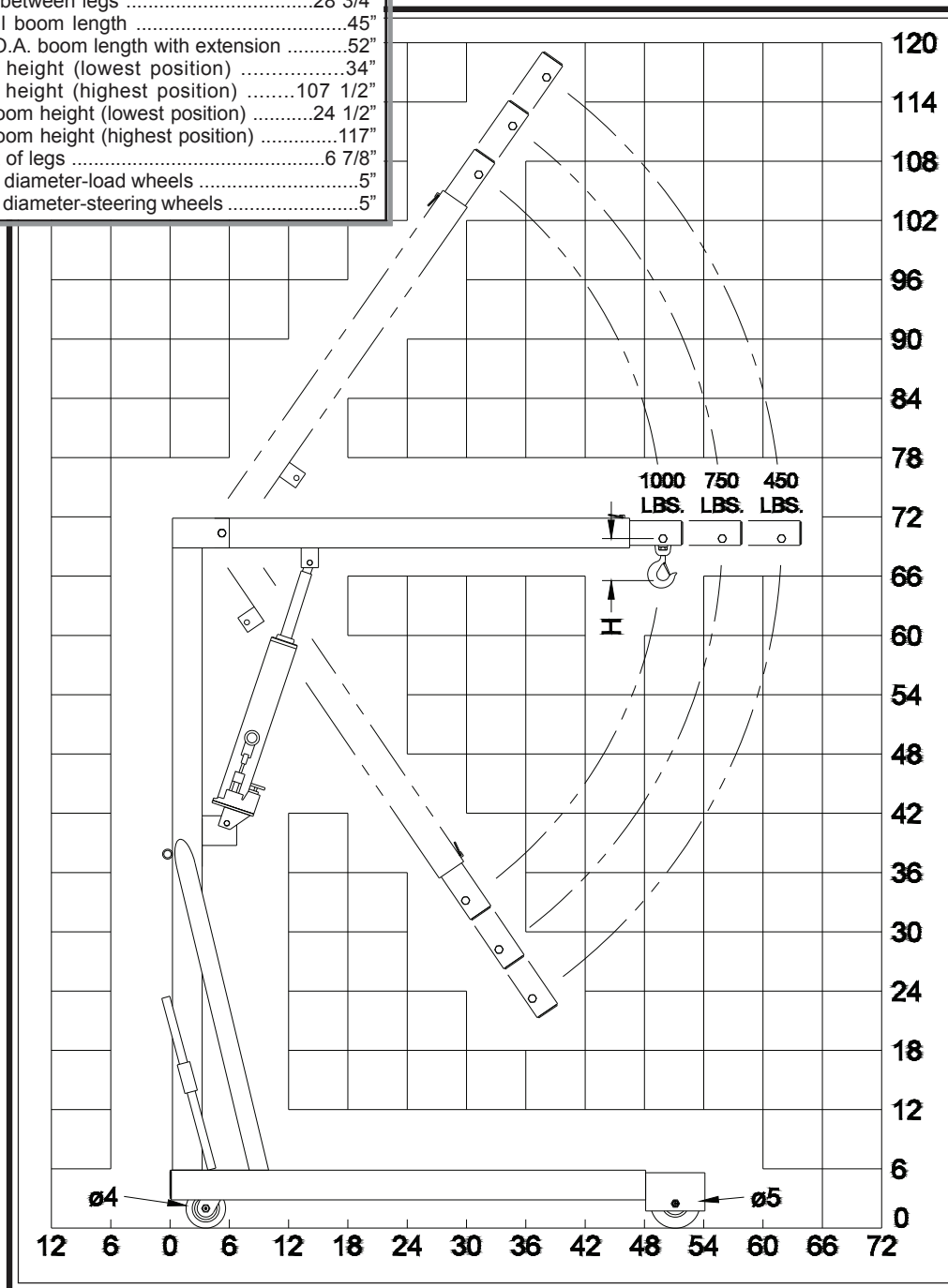
**VERSATILE**

**FLEXIBLE**

**AFFORDABLE**

# MODEL: RC1000

Model RC	1000
Capacity	1000 lbs
Overall base length	53 1/8"
Overall width	35"
Overall height	72 1/2"
Width between legs	28 3/4"
Overall boom length	45"
Max. O.A. boom length with extension	52"
Boom height (lowest position)	34"
Boom height (highest position)	107 1/2"
Ext. boom height (lowest position)	24 1/2"
Ext. boom height (highest position)	117"
Height of legs	6 7/8"
Wheel diameter-load wheels	5"
Wheel diameter-steering wheels	5"



PUMPING CYCLES needed to raise boom through full travel - 90.

Certain models can be shipped NEXT DAY.

Ask About our SPECIAL financing packages.

**NOTE:**  
 Ruger can modify any standard dimensions to meet specific customer needs.