



David Round & Son, Inc.
Ruger Products Division1
0200 Wellman Road
Streetsboro, OH 44241
Phone: 440-248-4700
www.rugerindustries.com

SPACE SAVER

EASY TO USE

VERSATILE

RELIABLE

RC2000K

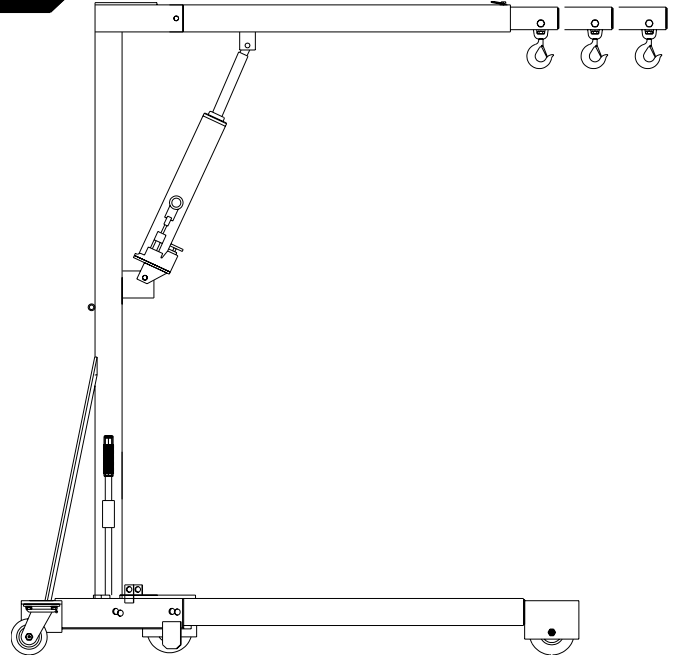
- **2000 lb. Capacity**
- **Compact Design to work in close quarters**
- **Easy to disassemble for storage in small areas.**

ACCESSORIES

- Barrel Grip
- Floor Lock
- Steel Wheels

STANDARD FEATURES

- Meets Ruger's structural engineering standards for 150% of normal lifting capacity
- Completely self-contained hydraulic system with single action jack
- Built-in hydraulic overload relief valve
- Needle type release valve permits pinpoint control over lowering and holding of the heaviest or lightest loads
- Standard adjustable telescopic boom
- Phenolic swivel casters
- Phenolic wheels with roller bearings
- Swivel hook with a safety latch to support heavy loads



RC2000K disassembles quickly and safely for ease of transportation and minimum storage space.

Tested and exceeds ANSI/ASME PALD-12C standards.

Meets ANSI Z.535

Prices, Specifications, and Options are subject to Change Without Notice.

All Ruger products are shipped F.O.B. Streetsboro, OH 44241

Unit Ships-NMFC #189240 - Class 85

FAX: 440-248-8544 Email: info@davidround.com



David Round & Son, Inc.
 Ruger Products Division
 10200 Wellman Road
 Streetsboro, OH 44241
 Phone: 440-248-4700
 www.rugerindustries.com

SPACE SAVER

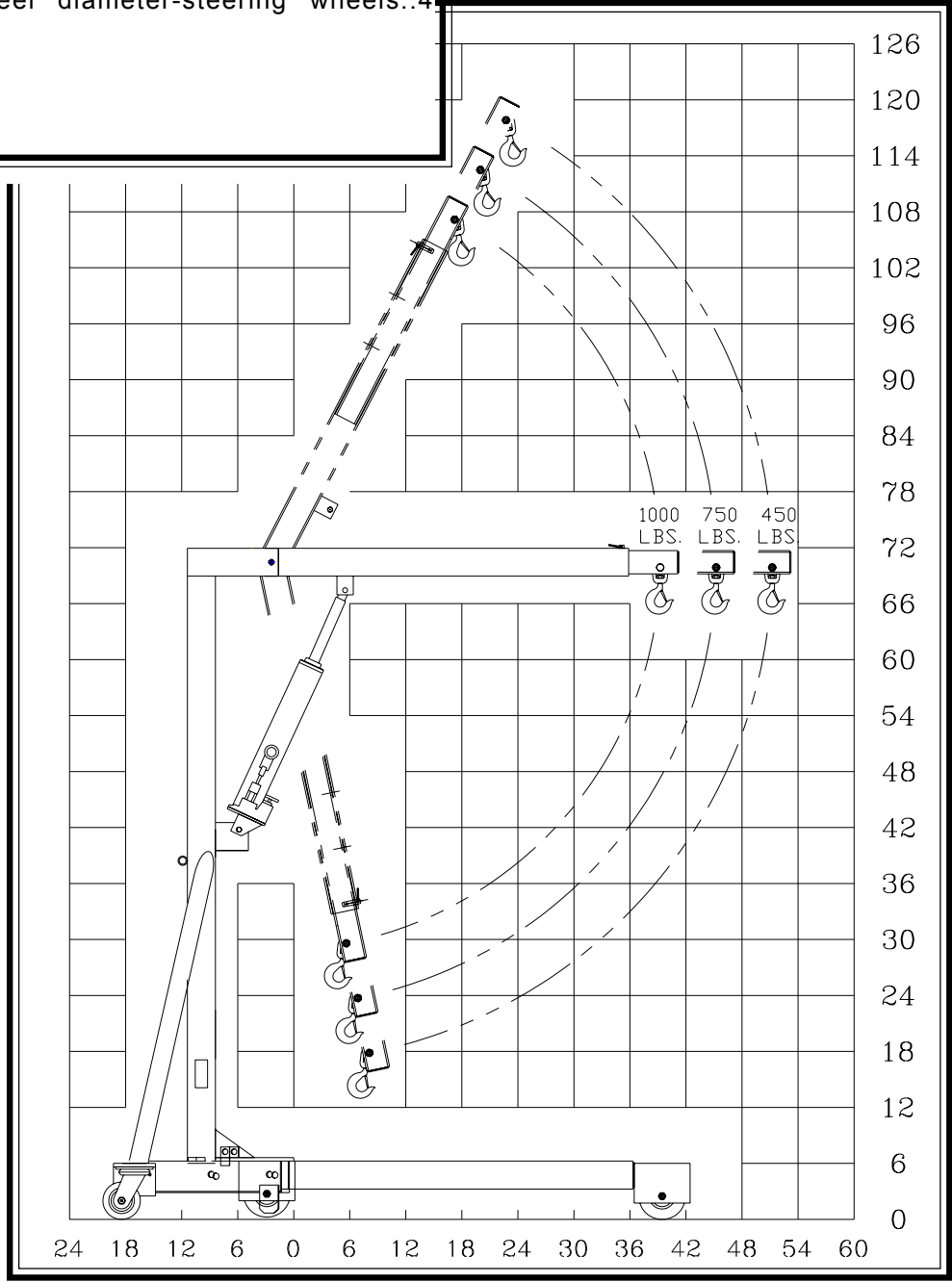
EASY TO USE

VERSATILE

RELIABLE

RC2000K

Model.....	RC2000K
Capacity.....	2000 lbs
Overall base length.....	76'
Overall base length broken down.....	23 1/8'
Overall width.....	51 1/2'
Overall width broken down.....	32'
Overall height.....	74 3/8'
Height of legs.....	6'
Wheel diameter-load wheels.....	5'
Wheel diameter-steering wheels.....	4'



PUMPING CYCLES needed to raise boom through full travel: 90.

Certain models can be shipped NEXT DAY.

NOTE:
 Please be advised chart at left may not be to scale for your crane.