



David Round & Son, Inc.
Ruger Products Division
32405 Aurora Road
Cleveland, OH 44139
Phone: 440-248-4700
Fax: 440-248-8544
Email: info@davidround.com
www.rugerindustries.com

For safety, one copy of this manual must be stored on the equipment and referred to by all operators.

RC750R

SERIAL NUMBER

OPERATOR'S MANUAL

All operators must read, fully understand, and apply all safety instructions, before operating this equipment.

**IMPROPER USE
OF THIS EQUIPMENT
CAN BE HAZARDOUS!**

Congratulations on your purchase of a standard design Reversed Crane. You now own one of the most versatile cranes in the market. In order to ensure many years of safe and dependable service, please read this Operator's Manual before using the equipment. If you have any questions or need additional information, please contact us at:

Phone: 440-248-4700

Fax: 440-248-8544

E-Mail: info@davidround.com

www.rugerindustries.com

Below is a list of standard accessories that you should have received with your RC750R

- Operator's Manual
- Extension Boom
- Extension Boom Safety (Detent) Pin
- Steering Handle and Pin
- Counterweight
- Jack Handle

Contents

General Information	1
Receiving and Pre-operational Instructions	1
Returned Goods Authorization	2-3
Insert Sheets	4-5
Maintenance Instructions	6
Recommended Parts	7
Operational Steps	8
Lubrication	9
Safety Tips For Using Ruger Cranes	10
Warranty	11-13

GENERAL INFORMATION

1. When ordering parts indicate the **Model and Serial Number**. This information is provided to you on the front cover of this manual. The Model and Serial Number can also be found on the Serial Number tag on the unit located on the mast section of the equipment.



2. Ruger Parts Department can be reached at 440-248-4700 , 9 AM to 5 PM EST. time, Monday through Friday except for holidays.

3. All parts are FOB Cleveland, OH. Terms are Net 30 with approved Credit or Credit Card or Wire Transfer. Minimum order is \$50.00.

4. Quality at Ruger starts with raw materials which are inspected to insure our products will be of good quality and free from defects. Each product is tested completely and rechecked before shipment.

RECEIVING AND PRE-OPERATIONAL INSTRUCTIONS

Upon receipt of this unit, visually inspect for damage that may have occurred during shipment and report any damages to the carrier.

In accepting this shipment from Ruger Industries Inc. the carrier has acknowledged receipt in good condition and complete as shown on the Packing List and/or Bill of Lading.

Ruger Industries responsibility for this shipment has now ceased. Any shortages or damage must now be resolved between the carrier and the receiver.

Ruger will not be responsible for loss or damage when you give the transportation company a clear receipt.

Inspect this material before accepting. **DO NOT** accept when damage or shortages are visible unless the carrier makes a damage notation on your freight bill.

Look for and report concealed loss or damage to carrier with **48 hours** and request inspection by the carrier. This is absolutely necessary, otherwise, the transportation companies will not entertain any claim for loss or damage. If the carrier will not make an inspection, then you should make an affidavit that you notified him/her (on a certain date) and he/she failed to do so. This, with other papers, will properly support your claim.

Ruger is willing to assist in every possible manner in collecting claims for loss or damage, but this willingness on Ruger's part does not include responsibility for collection of claims or assumption of cost of replacement of damaged or lost materials.

RECEIVING PROCEDURES

BEFORE ACCEPTING DELIVERY FROM THE CARRIER

In accepting this shipment from Ruger Equipment, Inc., the carrier has acknowledged receipt in good condition and complete as shown on the Packing List and/or Bill of Lading.

RECEIVING INSPECTION CHECK LIST

- Check **wheels and casters** - they should turn freely and be free of dents, cracks and flat spots.
- Check **hoses, fittings and rams** for hydraulic leaks. Hydraulic leaks indicate loose or broken fittings, hoses etc. Hose and tubing should be free of kinks and buckles.
- Check **main frame components**, legs, forks, booms, handles and sheet metal for dents, cracks and misalignment.
- Check **wiring** to assure it is securely connected and in good condition.
- Check **batteries** for cracks, leaks. Check electrolyte level.
- Check **main structure bolts, nuts and pin retainers** for tightness.
- Check **chains and cables** for breaks or obstructions.
- After **visual inspection**, make operational test to assure unit is functioning properly.
- Is everything there?** Check packing list to be sure optional equipment is there. Make sure lifting chain is with crane. Be sure manual pump handle is there.
- Paint finish** - scratches and scrapes to painted surfaces incurred during shipment are accepted as necessary evil. Costs of protective crating to protect paint are so high that it's better to accept a few scrapes to the finish.

RETURNED GOODS AUTHORIZATION

RETURNED GOODS AUTHORIZATION number **must** be assigned by the Ruger customer service department for approved returns. This number **must** appear on all accompanying paperwork.

There will be a **Restocking Charge** for all returned purchases.

Customized units are **not returnable** and are **non-refundable**.

When calling for a **RETURNED GOODS AUTHORIZATION** number the following information must be supplied:

- 1) Invoice Number
- 2) Date of Invoice
- 3) Serial Number
- 4) Carrier Name
- 5) Return Ship Date
- 6) Reason for Return

CREDIT WILL ONLY BE ISSUED AT THE TIME OF
RETURNED GOODS AT THE FACTORY

Packing Slip must accompany all returns.

**RECEIVING DOCK DELIVERIES
MONDAY THROUGH FRIDAY
8:00 A.M. TO 4:00 P.M. EST
EXCEPT HOLIDAYS**

VERSATILE

COMPACT

AFFORDABLE

RELIABLE

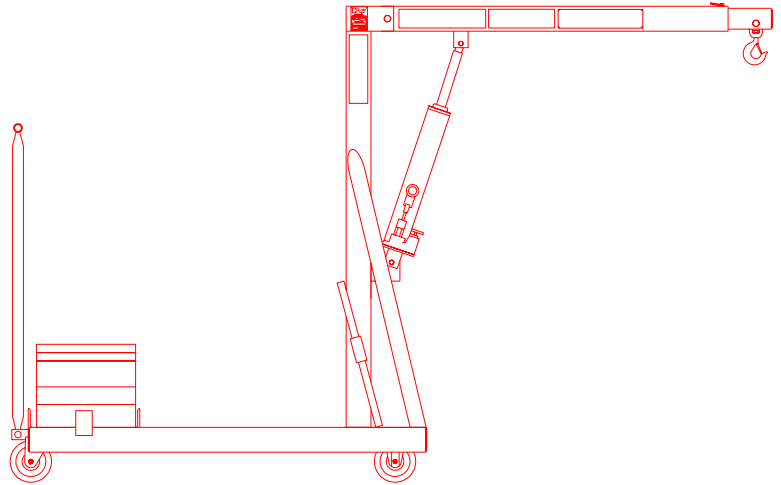
David Round & Son, Inc.
Ruger Products Division
32405 Aurora Road
Cleveland, OH 44139
Phone: 440-248-4700
www.rugerindustries.com

RC750R

- **750 lb. Capacity**
- **Reversed base eliminates front leg straddle problems**

ACCESSORIES

- **Barrel Grip**
- **Floor Lock**
- **EZ Steer**



STANDARD FEATURES

- Meets Ruger's engineering standards of 150% structural overload of maximum rated capacity
- All counterbalanced units are built to exceed an 125% stability factor
- Completely self-contained hydraulic system with single action jack
- Built-in hydraulic overload relief valve (An original Ruger patent)
- Needle type release valve permits pinpoint control over lowering or holding of the heaviest or lightest loads
- Adjustable built-in telescopic boom
- Standard casters with non-marking hard rubber wheels with sleeve bearings
- Swivel hook with safety latch to support heavy loads

Prices, Specifications, and Options are subject to Change Without Notice.

All Ruger products are shipped F.O.B. Cleveland, Ohio 44622
Unit Ships-NMFC #189240-Class85 Shipping Wt. 200 lbs
Counterweight Ships-NMFC #107420-CLASS50 Shipping Wt. 895 lbs

FAX: 440-248-8544

The RC750R has a built-in manual telescopic boom extension for more reach and height.

Tested and exceeds ANSI/ASME PALD-12C standards.
Meets ANSI Z.535

MD1001F2

David Round & Son, Inc.
 Ruger Products Division
 32405 Aurora Road
 Cleveland, OH 44139
 Phone: 440-248-4700
 Fax: 440-248-8544
 Email: info@davidround.com
 www.rugerindustries.com

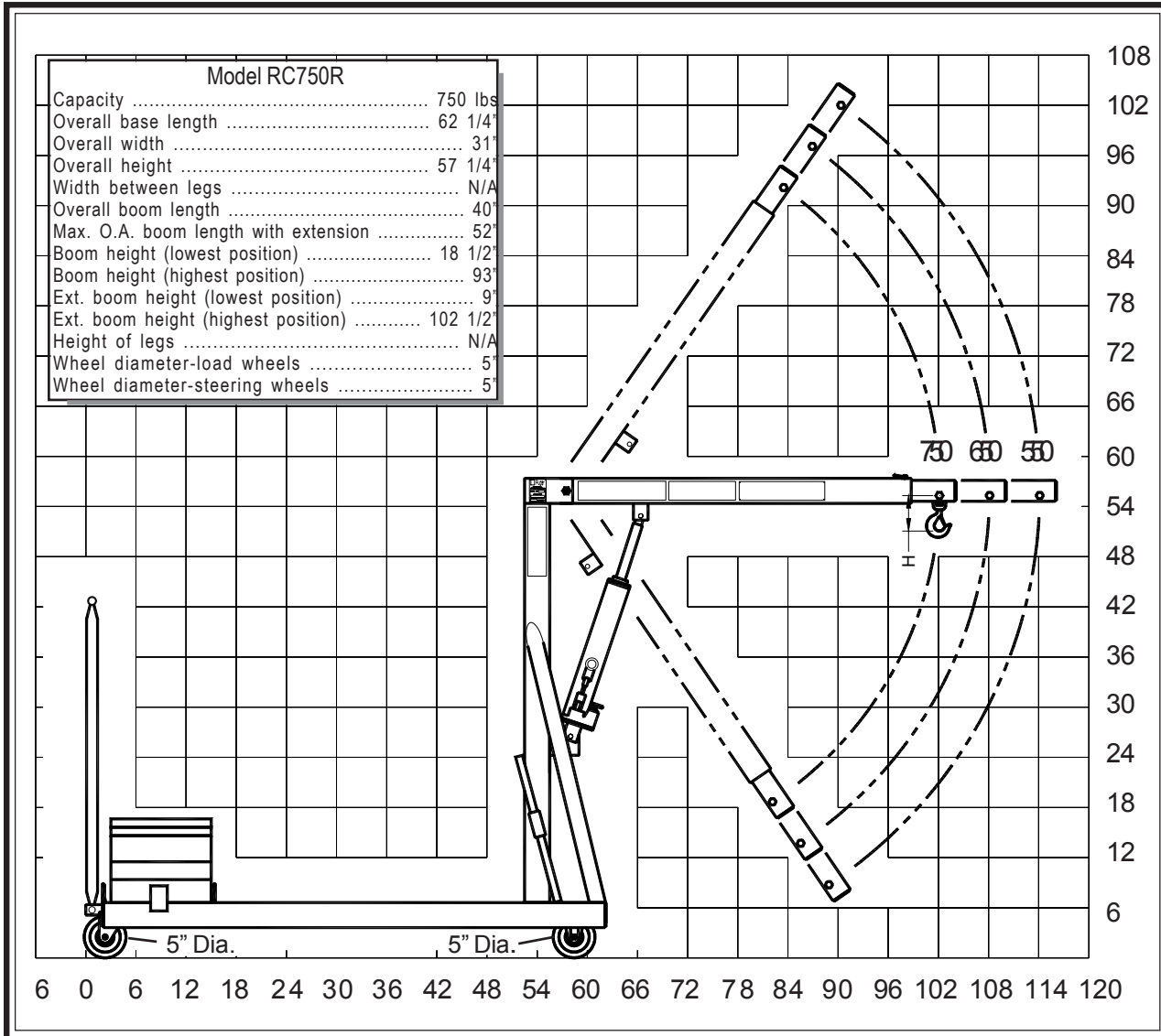
VERSATILE

COMPACT

AFFORDABLE

RELIABLE

MODEL: RC750R



PUMPING CYCLES needed to raise boom through full travel: 90.

Certain models can be shipped NEXT DAY .

NOTE: Ruger can modify any standard dimensions to meet specific customer needs.

MAINTENANCE INSTRUCTIONS

NOTE: There is an overload relief valve built into the hydraulic system of every new Ruger Crane. This safety valve is set at the factory, under measured loadings, and opens at about 10% over the rated capacity, preventing the crane from lifting.

**IF THE CRANE FAILS TO HOLD OR LIFT ITS RATED LOAD....
REMOVE THE CRANE FROM ALL SERVICE WORK.**

Contact the factory Customer Service Department at 440-248-4700.

When calling the factory, please have your Model and Serial Number ready, so we may better serve you.

Serial No. Tag -
Found on the
mast of the
Crane.

MODEL NO.

SERIAL NO.

LBS. CAPACITY

EVERY TIME USAGE -

- Check the Hydraulic Jack for oil leakage.
- Inspect the Safety Swivel Hook with Latch to ensure safe lifting of loads.

WEEKLY -

- Check the Pins for excessive wear.

MONTHLY -

- Check the Casters for excessive wear or uneven travel.

QUARTERLY -

- Check all welded joints.

David Round & Son, Inc.
Ruger Products Division
32405 Aurora Road
Cleveland, OH 44139

www.rugerindustries.com
Phone: 440-248-4700
Fax: 440-248-8544

...a better way to work with heavy loads

RECOMMENDED PARTS

ORDER PARTS BY PART NAME AND NUMBER.
BE SURE TO INCLUDE MODEL AND SERIAL NUMBER.

All parts are FOB Cleveland, OH. Terms are Net 30. Minimum order - \$50.00

MODEL _____ SERIAL NUMBER _____

CRANE MODEL N° RC750R

BOOM EXTENSION CAPACITIES-LBS.

STD POSITION	1st POSITION	2nd POSITION	3rd POSITION
750	650	550	NA

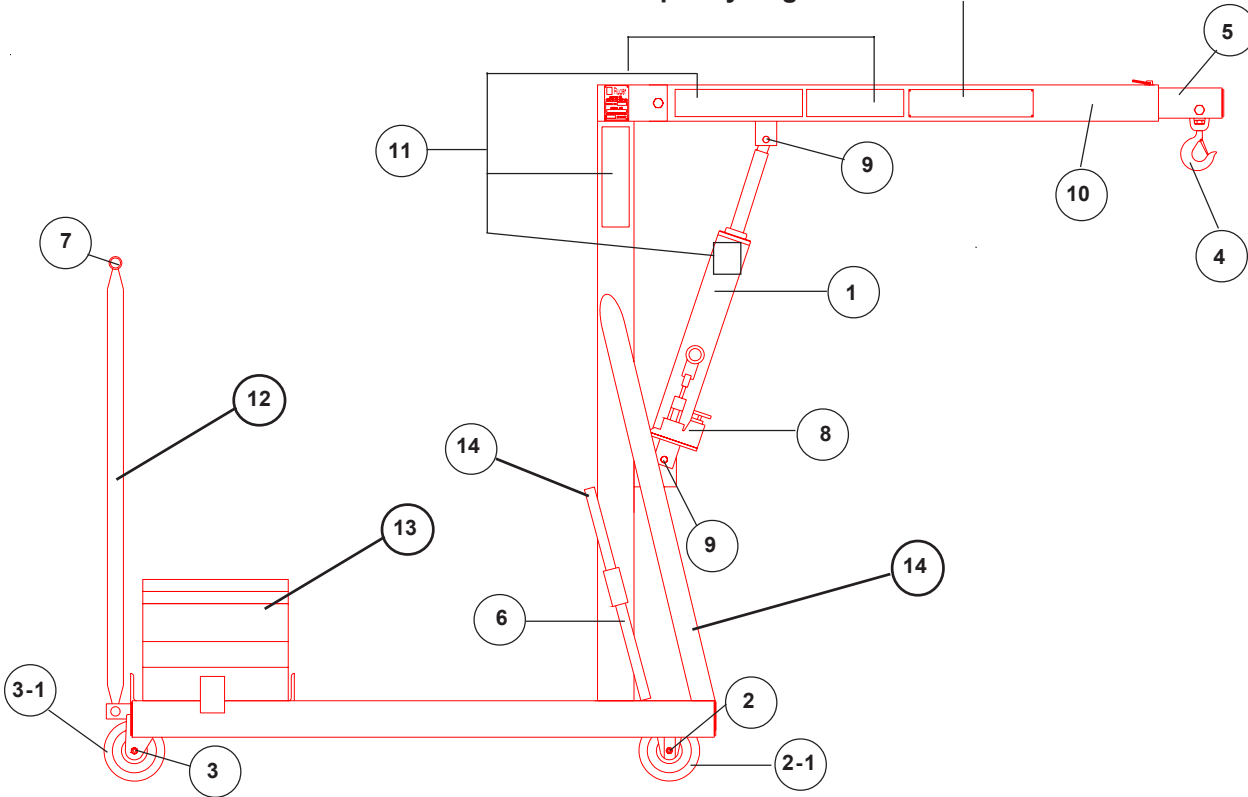
WARNING

EXCEEDING CAPACITIES SHOWN
CAN CAUSE CRANE TO TIP OVER
RESULTING IN DAMAGE TO
PROPERTY AND PERSONAL INJURY.

RUGER EQUIPMENT INC.
UHRICHVILLE, OHIO 44883 USA

211541

Capacity Tag - Found on boom of crane



ITEM NO.	DESCRIPTION	PART NO	ITEM NO.	DESCRIPTION	PART NO.
1	Hydraulic Jack	09-004	7	Handle Grip	99-510
2	Load Caster w/wheel	07-800	8	Jack Base	7687769
2-1	Load Wheel Only	07-802	9	Pin	808470
3	Steering Caster w/ wheel	07-801	10	Pin	5597
3-1	Steering Wheel Only	07-802	11	Decal Kit	211544
4	Safety Swivel Hook w/Latch	20-210	12	Steering Handle	ST-2
5	Extension Boom	211535	13	Counterweight	99-622/98-750
6	Jack Handle	7677781	14	Grip	99-511

OPERATIONAL STEPS

Standard Boom Extension. To operate the boom extension, first remove the pin that holds the boom in place. After removing the pin pull the extension boom until one of the other two pin holes is revealed and place the pin in the desired hole location. (SEE DIAGRAM # 2).

DIAGRAM # 2

Operating the Hydraulic Jack To operate the hydraulic jack you need to start by setting the release valve. In order to raise the boom the valve needs to be closed. To close the valve turn the valve knob clockwise (CW) until it stops turning. To lower the boom turn the valve knob counter-clockwise. The further you turn the knob counter-clockwise (CCW) the faster the boom will lower. (SEE DIAGRAM # 3).

To raise the boom, close the release valve CW, insert the jack handle into the jack lever and move the handle up/down. (SEE DIAGRAM # 4)

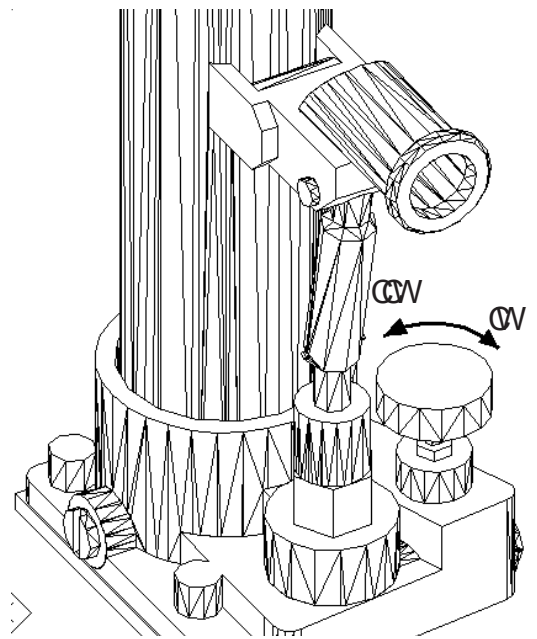


DIAGRAM # 3

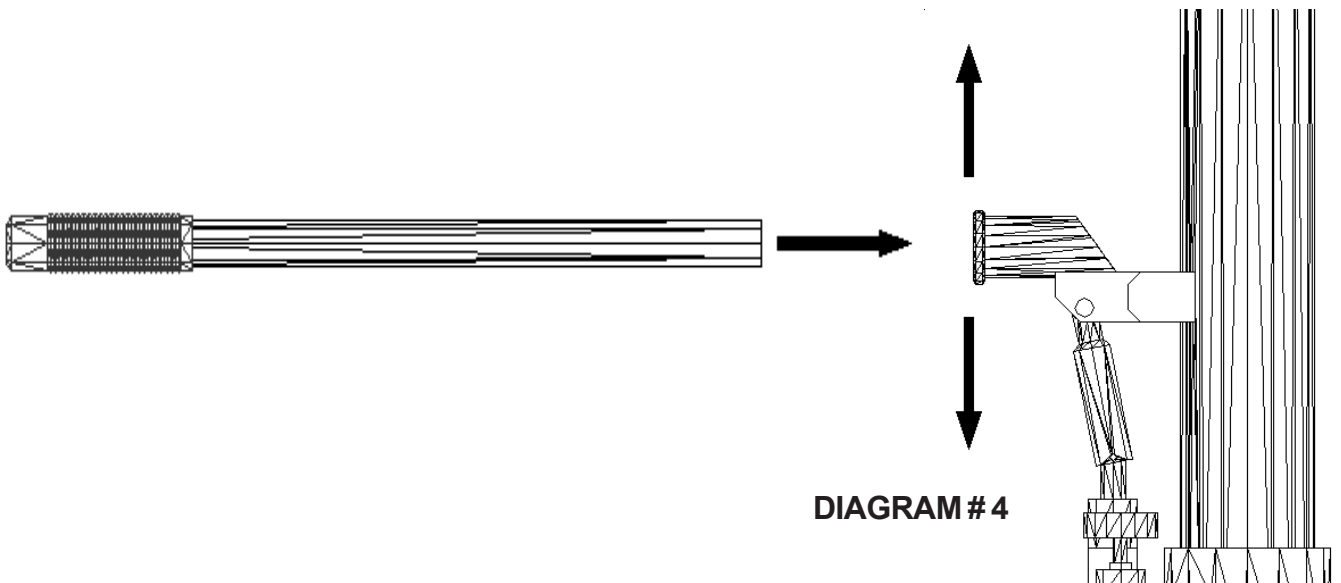
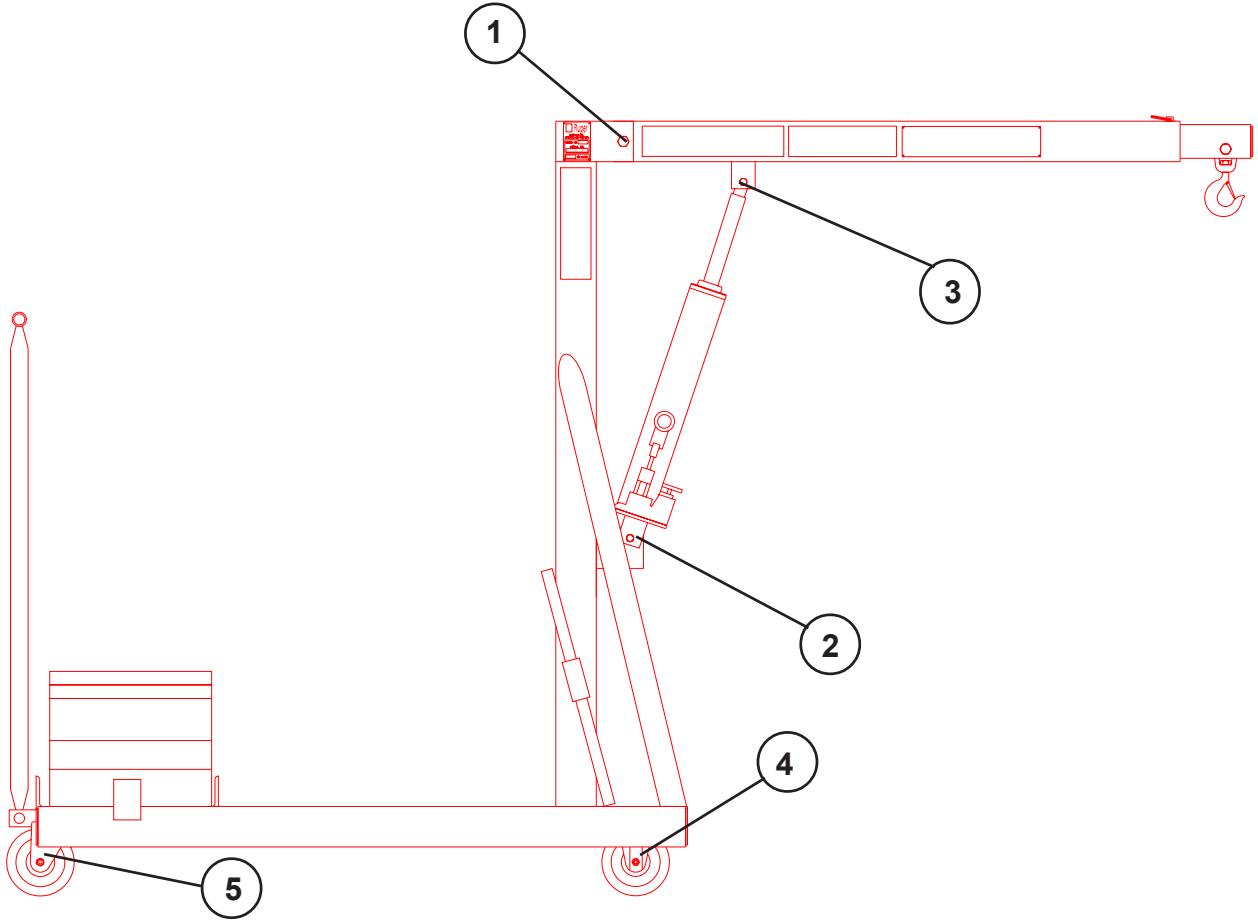


DIAGRAM # 4

LUBRICATION



ITEM NO.	DESCRIPTION	OIL	WHEN
1	Boom Pivot Point	Chassis Lube	Apply Monthly
2	Jack Mount Pivot Point	Chassis Lube	Apply As Needed
3	Cylinder Ears on Boom	Chassis Lube	Apply As Needed
4	Load Wheel Axles	Chassis Lube	Apply Monthly (Do Not Spray Wheels)
5	Steering Wheel Axles	Chassis Lube	Apply Monthly (Do Not Spray Wheels)
Chassis Lube = White High Pressure Lithium Grease Spray			

SAFETY TIPS FOR USING RUGER CRANES

Operator

Safe operation of this equipment is your responsibility.

NO PERSON shall operate this crane unless they have received instructions for its proper use from a qualified person and have completely read the operators manual.

When more than one person is involved in the operation of the crane, one person should supervise and give all orders, to avoid confusion and to promote safety.

Obey plant safety rules; obey a stop signal from anyone.

Refuse to handle loads until safety has been assured.

Test the stability of the system before using. Adjust if necessary.

Always transport loads as close to the floor as possible.

DO NOT exceed load ratings of other components in the load lifting system-cables, slings, etc.

Never leave a raised load unattended.

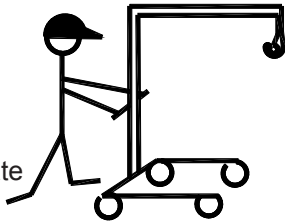
Never walk, stand or work under a raised load.

Keep hands away from load bearing chains, cables and slings while operating.

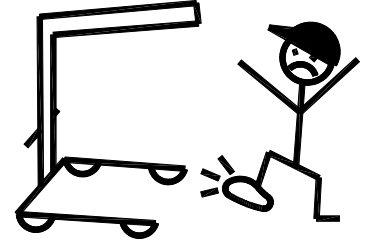
Make sure load clears nearby stockpiles, machines or other obstructions when raising, lowering or moving the load.

Make sure load is totally disconnected from any fasteners before lifting and transporting.

Avoid sudden acceleration or deceleration of the crane. **DO NOT** make sudden sharp turns while moving the crane, loaded or empty.



Keep hands and feet clear of crane base and wheels. Also, in facing away from crane while pulling, maintain distance to prevent crane from rolling into your own heel.



Use standard hand signals when operating with other persons. Make sure all concerned understand signals to be used.

Make sure floor area over which the crane travels is level and free from debris and other materials that may interfere with normal crane travel.



Use caution when working near electrically charged lines or equipment.

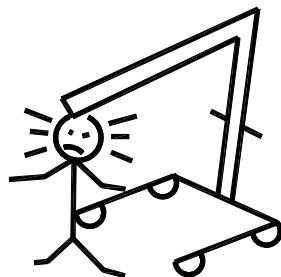
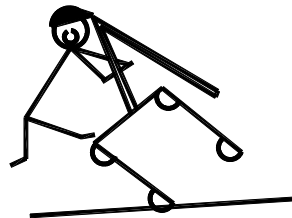
DO NOT use your crane to lift more than its rated load. Load ratings are based on new equipment. Age, wear, improper maintenance, and improper use will reduce load ratings. **DO NOT** continue operation of a crane damaged by misuse or overloading.

Never use two or more cranes to lift a load greater than the capacity of a single crane - a shifting load may place entire load on one unit.

Apply the load evenly, do not jerk or bounce or allow the load to swing. Avoid violent motion and shock loads.

People

DO NOT lift or lower people or things over people with this equipment.



WARRANTY

We warrant that our products will be of good merchantable quality, free from defects in material and workmanship, and will possess the characteristics represented in writing by us.

Ruger Industries, Inc. will, within a reasonable time, repair or replace at its sole discretion, any of the following parts upon satisfactory proof of breach of the above warranty.....	If the defect occurs within the following period after shipment from the factory to the original purchaser:
1) Any defective parts	12 months
2) Hydraulic seals	12 months
3) Contactors, solenoids, wiring and hoses	12 months
4) Weldments, castings, drive units, motor, hydraulic rams, pumps and valves.	12 months

THE FOREGOING IS IN LIEU OF ALL OTHER WARRANTIES, EXPRESS OR IMPLIED, INCLUDING ANY WARRANTIES THAT EXTEND BEYOND THE DESCRIPTION ON THE FACE HEREOF.

It is understood that Ruger Industries Inc., will not be liable for consequential damages of any nature including, but not limited to, loss of profit, delays or expenses, whether based on tort or contract. Our obligations are solely limited to repair or replacement of defective parts.

EXCLUSIONS

This Warranty does not extend to:

- 1) Damage occurring during shipment. It is the buyers obligation to check products for damage during shipment and if such damage is discovered, to make an appropriate claim to carrier or shipper.
- 2) Work performed by distributors or service people are not covered by this Warranty or not authorized by Ruger in writing.
- 3) Defects caused by misuse or abuse by the buyer. Twisted or bent components, frames, forks, handles, push rods, etc. caused by misuse or abuse are not covered by Warranty.
- 4) Consequential damages of any nature whatsoever.

WARRANTY

The **objectives** of the Ruger warranty and its administration are:

FIRST - To get the customer's equipment into satisfactory operation.

SECOND - To determine a fair cost for accomplishing the above.

THIRD - To establish who should pay for the repair:

The **CARRIER**, who accepted the equipment in normal working condition and delivered it in damaged condition.

The **CUSTOMER**, who may have brought about the failure because of misuse, abuse, neglect of maintenance, or wear of a consumable material not covered by warranty.

The **DISTRIBUTOR**, who may have made a bad choice of equipment or model for the job.

The **MANUFACTURER**, when there is a problem in materials, assembly or design.

Upon delivery of a new piece of equipment, here is a series of useful steps to be taken by the distributor or customer to help prevent or reduce difficulty in event of future warranty claims. These steps are not the responsibility of the manufacturer. The suggestions are made to help eliminate avoidable problems and do not enlarge or reduce the customers rights under the standard Ruger warranty.

BEFORE Product is placed in service:

Included with the equipment is a receiving inspection check list. Do not relinquish your rights to claim for "CONCEALED DAMAGES" until this check list has been completed.

The section in the OPERATOR'S MANUAL which covers steps to be taken before placing the equipment in service should be followed.

The equipment should be cycled through all its functions several times.

It should be verified that the equipment will do the job for which it was ordered for.

If a problem occurs with a Ruger product, the ideal solution will get the equipment back into service promptly with costs of the repair paid by the appropriate party -- either the carrier, the customer, the distributor, the factory or some combination of these.

WARRANTY

In the event investigation of a service problem by the distributor discloses that correction should be at the customer's expense because of misuse or neglect, the customer should be notified of this before repair work begins and the distributor should bill the customer directly.

If the problem is the fault of the carrier (damage in transit), or the distributor (misapplication of the product), costs of repairs should be billed to and honored by them directly.

When factory compensation appears justified, the factory maintains sole final discretion to determine if the malfunction is covered under the terms of the warranty. In this situation, the distributor or customer has the choice of:

1. Proceeding with repairs and submission of invoices for factory payment or credit, relying on the fairness of Ruger's service people to back up the customer, the distributor and the equipment to the maximum responsible limit subject to the terms of the warranty itself, or.....
2. Solicit factory approval before incurring any costs at all. In this case, the distributor or customer should get all preliminary details possible and call the **FACTORY SERVICE DEPARTMENT at 440-248-4700**. In this way, a preliminary diagnosis and factory commitment can be obtained on ceilings for travel, labor, parts, and freight. Thus, the distributor knows where he stands with the factory and needed parts can be sent off. If the factory authorizes the supply of parts under warranty by the distributor from his own stock, they should be invoiced.

Prior factory approval is **REQUIRED** when:

1. Non-factory parts are being invoiced to the factory.
2. Shipping charges in or out on replacement parts are being paid by the factory.
3. Field assistance is being furnished at factory expense.
4. Warranty claims are to be deducted from Ruger invoices.